



Dilana

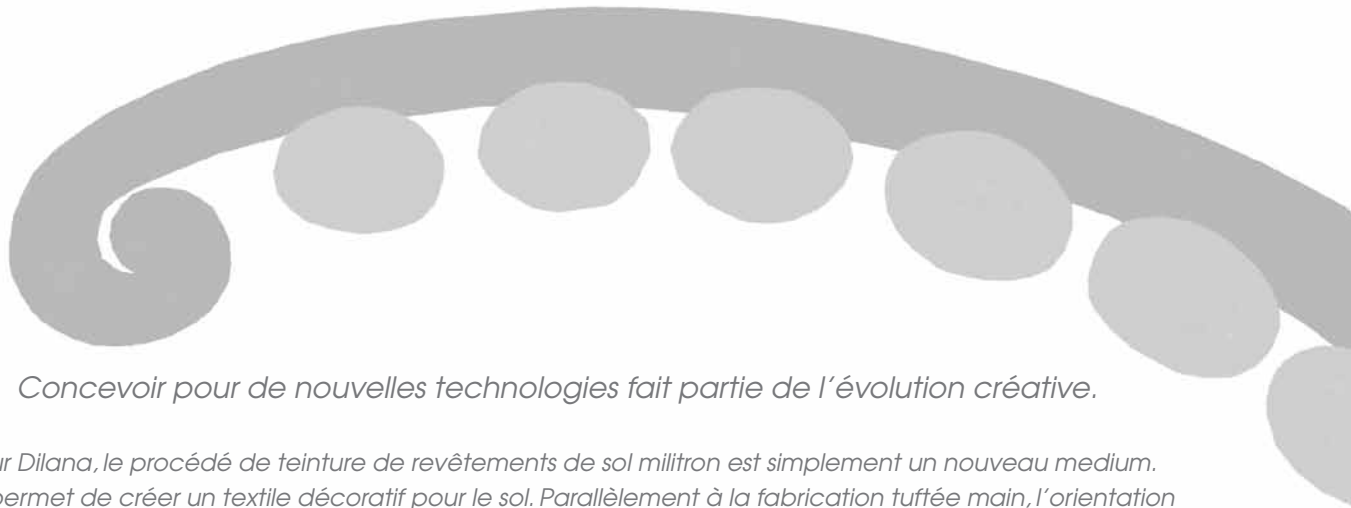
ARTIST AREA CARPETS



Designing for new technologies is part of creative evolution.

For Dilana, the militron dye injection carpet manufacturing method is simply another medium. It creates a decorative textile for the floor. Alongside hand tuft, the digital orientation of militron, with its capability to organise pattern and composition over vast floor areas, offers a new unexplored realm for the artist to work in. The properties of these large room-size rugs differ from that of a smaller rug. They carry the underlying aesthetic value that most other objects in the room stand on, relate to, or work off. This interesting dynamic, used effectively, introduces an additional layer of design attitude to our work or living spaces.

Dilana Rugs would like to thank artists
Andrew McLeod, Gavin Chilcott, Michael Reed and Richard Killeen
for their contribution to this project.



Concevoir pour de nouvelles technologies fait partie de l'évolution créative.

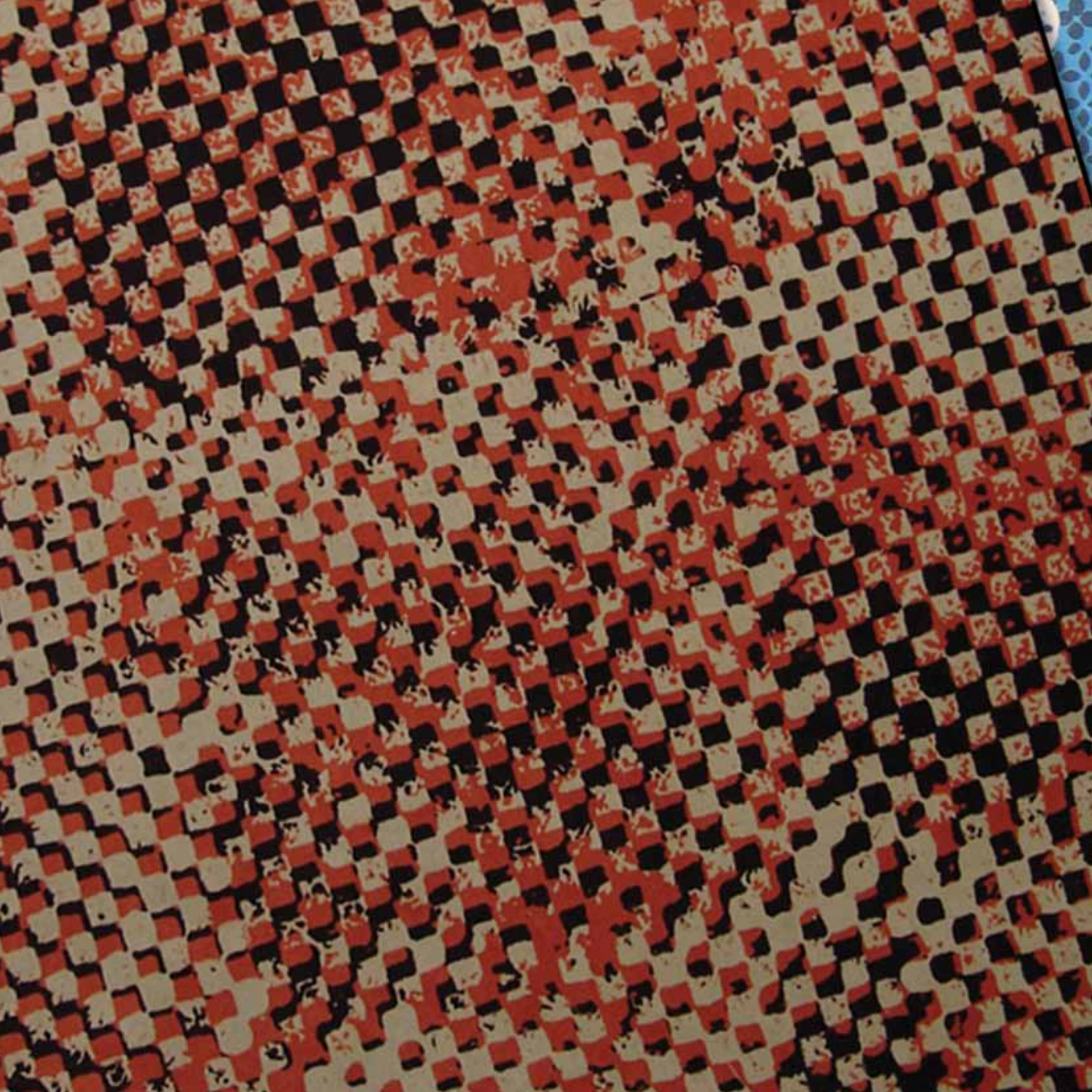
Pour Dilana, le procédé de teinture de revêtements de sol militron est simplement un nouveau medium. Qui permet de créer un textile décoratif pour le sol. Parallèlement à la fabrication tuftée main, l'orientation digitale du militron, qui permet de faire des compositions créatives sur de très larges surfaces, offre un nouveau territoire de création à l'artiste.

Les propriétés de ces moquettes de surface large sont différentes de celles d'un petit tapis. Elles portent les valeurs esthétiques sur lesquelles les autres objets de la pièce se posent, représentent ou avec lesquelles ils s'accordent. Cette dynamique intéressante, utilisée efficacement, introduit une dimension artistique supplémentaire à nos espaces de vie et de travail.

*Dilana rugs remercie les artistes
Andrew McLeod, Gavin Chilcott, Michael Reed et Richard Killeen
pour leur contribution à ce projet.*

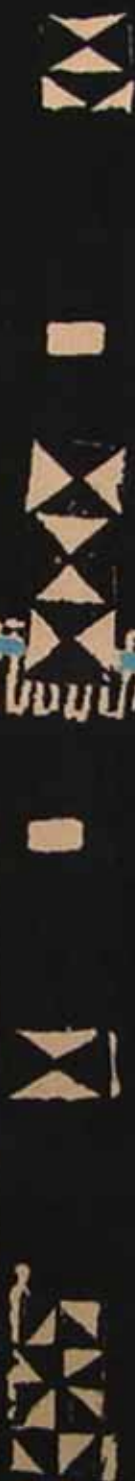
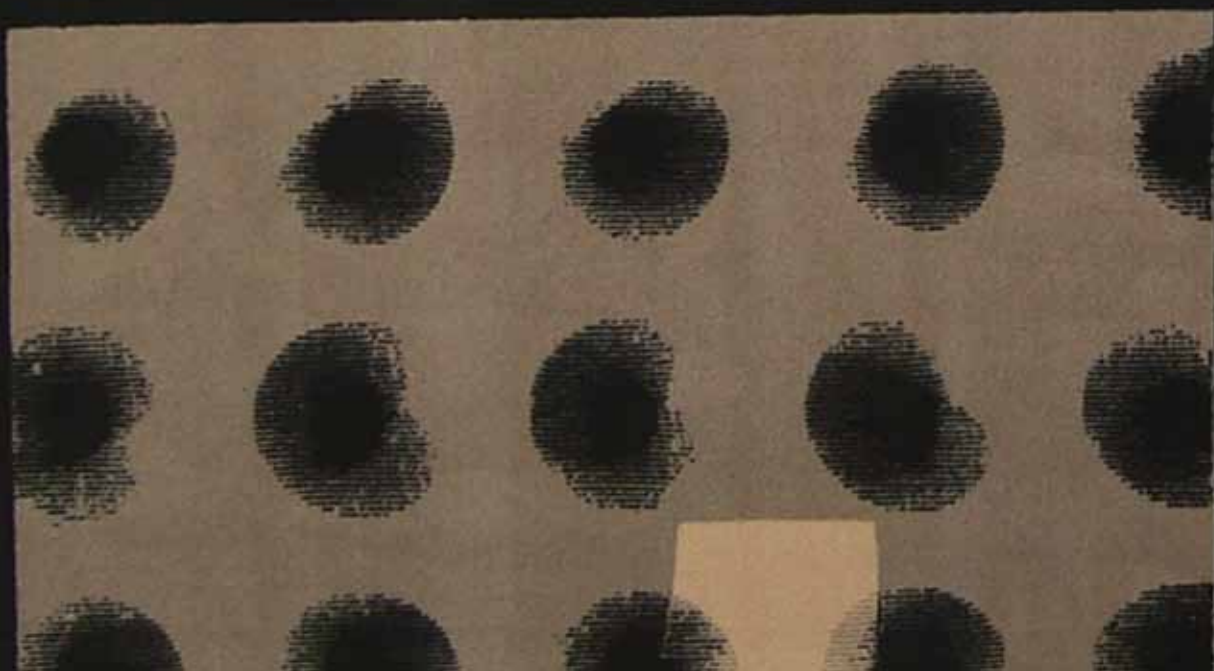






























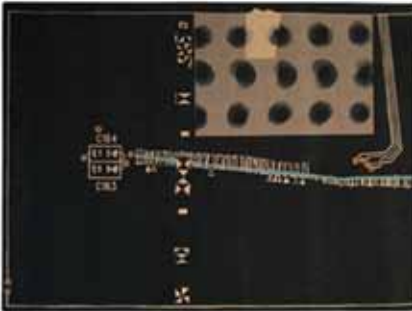
'Flyers' by Richard Killeen
4 x 4 metres (13.1 x 13.1 feet)
Palette 5295 / Colours 1, 2, 5



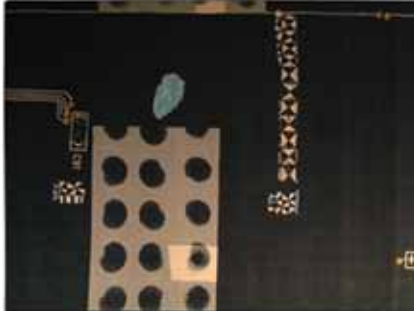
'Spiral Fork Leaf' by Richard Killeen
4 x 3.65 metres (13.1 x 11.9 feet)
Palette 5295 / Colours 1, 2, 4, 11



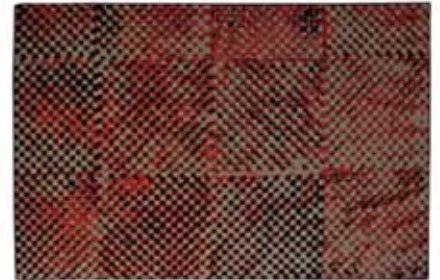
'Anise' by Gavin Chilcott
4 x 2.72 metres (13.1 x 8.9 feet)
Palette 5275 / Colours 1, 7, 18, 21, 46



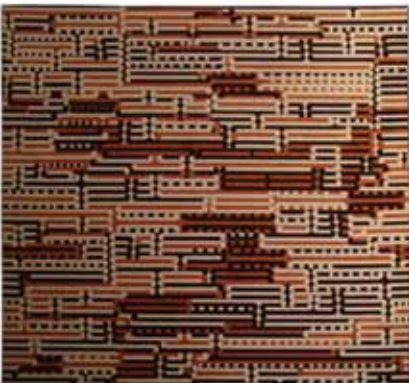
'Short Circuit in the South Seas II' by Michael Reed
4 x 3.04 metres (13.1 x 9.9 feet)
Palette 5275 / Colours 2, 3, 5, 7, 27, 47



'Short Circuit in the South Seas I' by Michael Reed
4 x 3.04 metres (13.1 x 9.9 feet)
Palette 5275 / Colours 2, 3, 5, 7, 27, 47



'Werkstatte III' by Gavin Chilcott
4 x 2.62 metres (13.1 x 8.6 feet)
Palette 5220 / Colours 48, 56, 77



'After Walters' by Andrew McLeod
4 x 3.74 metres (13.1 x 12.2 feet)
Palette 5295 / Colours 1, 10, 12



'Kowhaiwhai' by Andrew McLeod
4 x 1.8 metres (13.1 x 5.9 feet)
Palette 5295 / Colours 1, 2, 11, 32



'Kowhaiwhai' by Andrew McLeod
4 x 1.8 metres (13.1 x 5.9 feet)
Palette 5275 / Colours 1, 2, 3, 4



Highline 80/20 1400

Production description

Methods

Product Data

Construction

| | | |
|------------------------------|--------------------|-------------------------------|
| Structure | ISO 2424 | Tufted cut pile |
| Gauge | ISO 2424 | 1/8 |
| Pile Material | DIR 71/307 CEE MOD | 80% Pure new wool 20% Polymid |
| Coloration | - | Militron |
| Backing | | CL - Custom Latex |
| Antisoiling protection | eTL | Yes |
| Anti-1-spotted clothes moths | eTL | Yes |

Performance ratings

| | | |
|----------------------------|-------------|--------------------------|
| Performance areas | EN 1307 | Class 4, extra heavy use |
| Suitable for castor chairs | EN 985 | Yes, constant use |
| Static control | eTL | Permanently antistatic |
| Colour fastness to light | ISO 105-B02 | 6-7 |

Manufacturer

| | | |
|-----------------------|-----------|------------------------------|
| Factory certification | ISO 9001 | Audited and verified by BVQI |
| | ISO 14001 | Audited and verified by BVQI |
| | EMAS | Audited and verified by BVQI |

© Copyright 2009 Dilana Rugs Ltd.

No material from this publication may be reproduced or copied without prior consent of the owner.



France
MOAROOM
38 rue de Malte
PARIS 75011
moa_nzdesign@yahoo.fr
www.dilana.fr

New Zealand
GALLERY
40 George Street, Mt Eden
AUCKLAND
hugh@dilana.co.nz
www.dilana.co.nz

GALLERY & WORKSHOP
102 Buchan Street, Sydenham
CHRISTCHURCH
alison@dilana.co.nz